

MSC Series

Magnetic grating ruler



Feature:

- Non-contact and high-speed measurement.
- User resolution is selectable.
- Built-in LED status light indication.
- It has extremely strong anti-stain and anti-oil capabilities.
- Choose a simple installation method.
- Excellent economy.

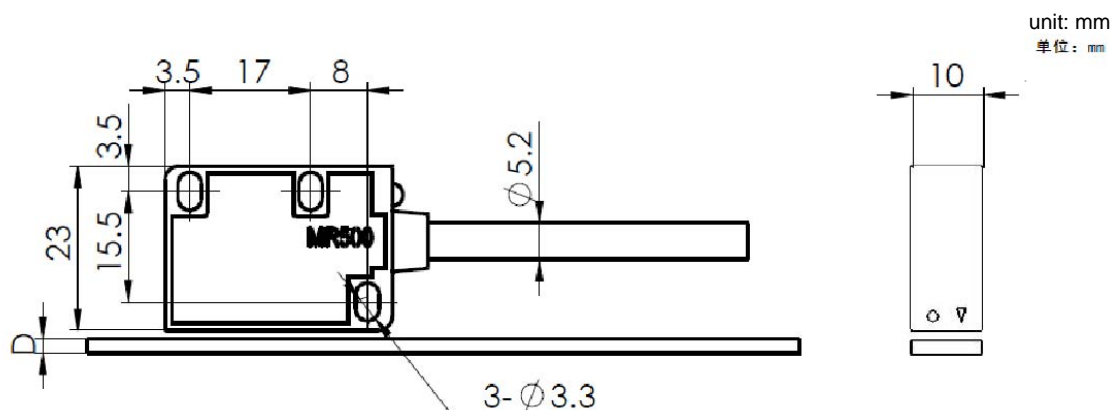
Details:

- Installation method: Guide rail
- The working status is equipped with a power indicator light and reverse connection protection
- The power supply isolation working voltage range is wide
- Be capable of EMC circuit design

Usages:

- Woodworking, stone processing, sawing and metal cutting
- Prevention and control, printing, packaging, plastic processing
- Automated cutting equipment, cutting devices
- Electronic assembly equipment, measurement/inspection equipment

Dimensions:



magnetic tape thickness	磁尺厚度	D
no double side adhesive included	不含双面胶	1.3mm
double side adhesive included	含双面胶	1.5mm
protecting steel belt included	含保护钢带	1.75mm

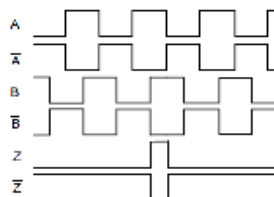
Main Parameters:

slide reading head	读磁头	MR520	MR521	MR522	MR523
matched magnetic belt	配套磁尺	MSC500			
resolution	分辨率	5μm	10μm	25μm	100μm
working voltage	工作电压	5 ~ 30V DC			
output signal	输出信号	A、/A、B、/B、Z、/Z			
accuracy level (20℃)	精度指标 (20℃)	±35μm/m			
repeatability	重复精度	Max. ±1个单位分辨率（单方向）			Max. ±1 unit of resolution (single direction)
measuring range	测量长度	用户指定（无限制）			customized (no limit)
fixing gap	安装间隙	Max. 2.5mm			
moving speed	移动速度	Max. 25m/s			
no-load current	空载电流	Max. 30mA			
output current	输出电流	Max. 50mA（每路信号）			Max. 50mA（signal for every channel）
signal cable	电缆线	PUR 超柔电缆线、超高弯曲性能			PUR very soft cable with high-flexibility performance
working temperature	工作温度	-20℃ ~ +85℃			
protection class	保护等级	IP68（IEC60529:2001）			
cable expansion coefficient	线胀系数	~ 10.5 10 ⁻⁶ /K			
anti-interference (EMC)	抗干扰 (EMC)	Electrostatic discharge(ESD: EN61000-4-2); Radio-frequency(EN61000-4-3, EN61000-4-6); Electrical fast transient(EFT: EN61000-4-4); Surge(EN61000-4-5); Power frequency magnetic field(EN61000-4-8);			

Wiring:

+VCC(8)	红red	/A(2)	蓝blue
0V(7)	白white	/B(4)	绿green
A(1)	黄yellow	/Z(6)	粉pink
B(3)	棕brown		
Z(5)	灰grey		

时序图 sequence chart



- MR500 系列Z信号每 5mm 有一个脉冲。

The MR500 series Z signal has a pulse every 5mm

Instructions:

