

TIP series

Linear Position Sensor



Feature:

Non-contact measurement, built-in structure, real-time monitoring.

The repeatability accuracy is less than 0.005%F.S and the nonlinearity is less than 0.05%F.S

High resolution, processed by 16-bit A/D chip.

Linear measurement, absolute value analog output (0-10)V/
(4-20)mA

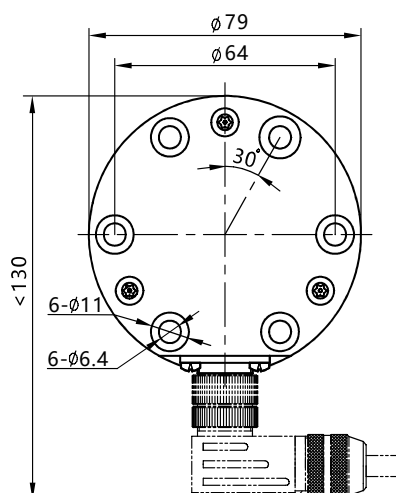
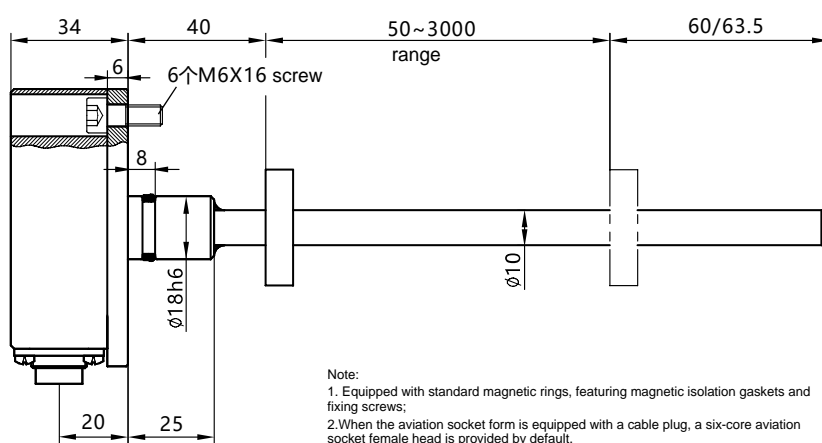
The maximum measurable stroke is 3000 mm

Details:

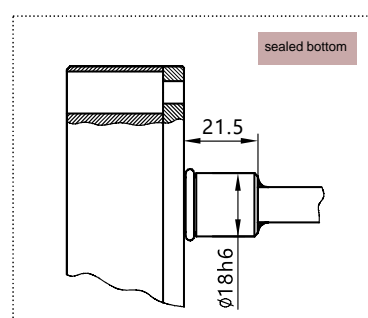
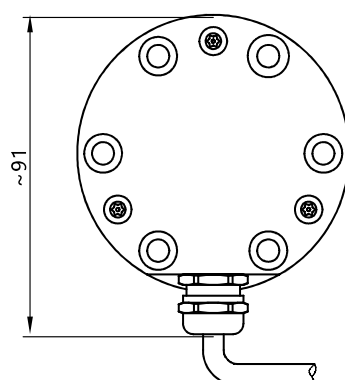
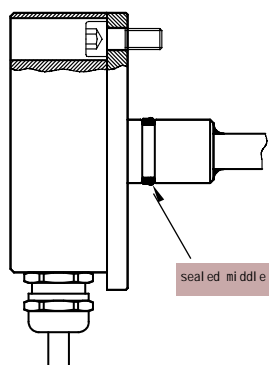
- The measuring rod is made of 304L stainless steel
 - Threaded interface M18*1.5 (optional)
 - Electronic compartment IP67 304L stainless steel (optional)
 - External pipe pressure: 34MPa (continuous), 70MPa(peak)
 - Outlet method: Direct cable or aviation plug
- Standard magnetic rings for position magnets and various ring-shaped magnets

Dimensions:

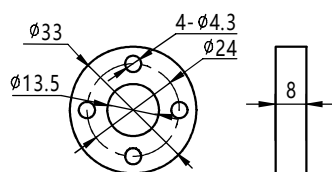
interface: aviation connector



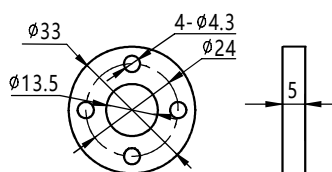
output: direct cable



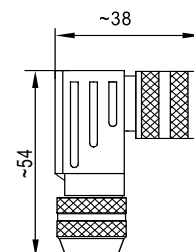
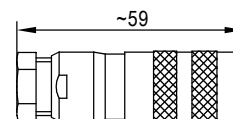
accessory size:



standard magnet ring: TIP-AC-01



Magnetic isolation gasket



Note:

1. Equipped with standard magnetic rings, featuring magnetic isolation gaskets and fixing screws;
2. When the aviation socket form is equipped with a cable plug, a six-core aviation socket female head is provided by default.

EEM33-82-N (6 hole M16 straight connector)
EEM33-94-N (6 M16 bent connector)

wiring define:

1. when sensor output way is aviation connector, wiring define refer to stable details;
2. when sensor output way is direct cable, wiring define refer to stable details;

analog signal	PIN	wire color	function define
 face to sensor	1	white	position signal of magnet ring
	2	brown	position signal of magnet ring
	3		sensor procedure wire
	4		sensor procedure wire
	5	blue	+24VDC±20% supply
	6	pink	0VDC supply cycle

Tech Parameter

Parameters	unit	Details
range	mm	50 - 3000 (25mm per level、range customized) ,
output signal		0 - 10 VDC (min load>10K Ohm)、4 - 20 mA(max load 500 Ohm),
resolution		analog: 16 bites D/A ,
Linearity	± %	analog: range>300mm(< 0.02% F.S.), range≤300mm max± 50um
repeatability	± %	0.0015. F.S
Hysteresis		<10 um
refresh frequency	HZ	range≤1m: 1000, 1m<range≤2m: 500, 2m<range≤3m: 300.
working temperature	°C	-40 - +85
output voltage fluctuation	%	< 0.02 % F.S. (min 5mVpp)
working voltage	V	24 VDC(± 10%) MAX=36 VDC(超压保护)
power consumption	mA	80
Electrical impact	V	500 (Between the electrical and mechanical ground)
Inverting voltage protection	V	max - 30 VDC
shock index	g	100(single) /IEC standard 68-2-27
vibration	g	10/10-2000HZ /IEC standard 68-2-26
protection class		IP 67 / 68
certificate level		accord with CE standard (pass EMC approval)
working humidity		90% (relative humidity) no condensation
temperature coefficient		for analog signal: <30ppm/°C .

Instructions:

